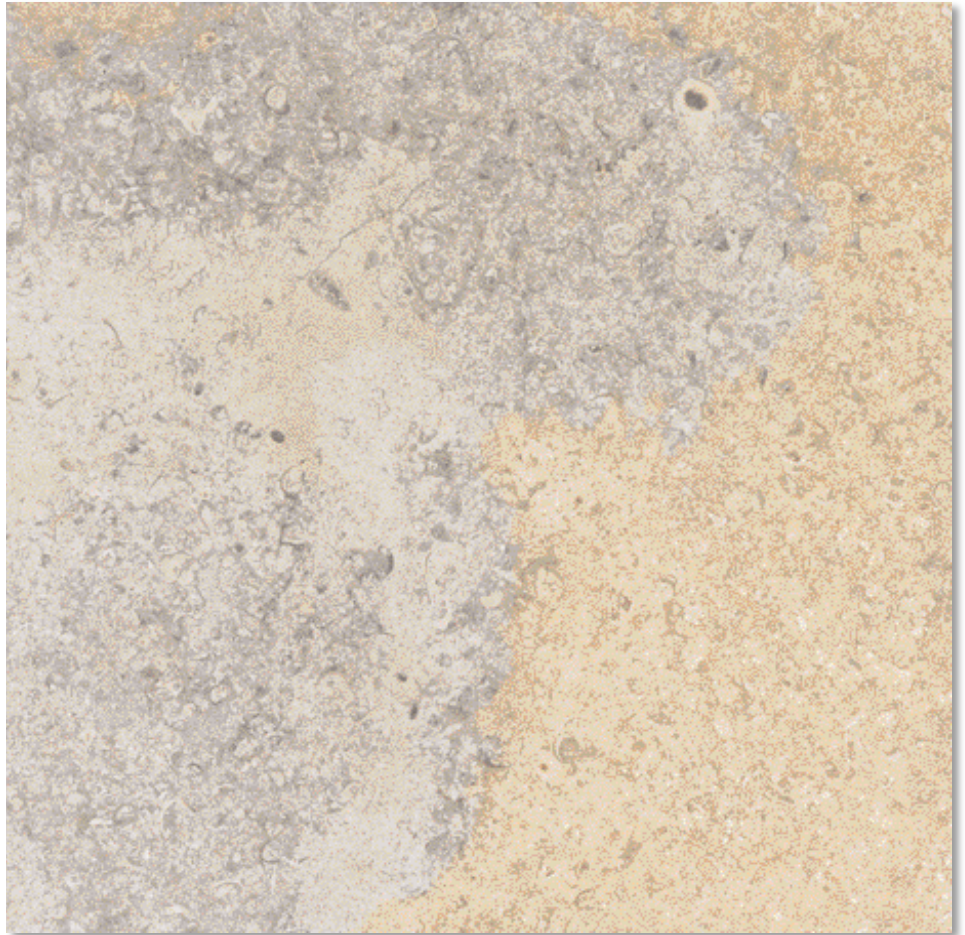


# Ancaster Weatherbed

**Quarry Location:**

Ancaster Quarry  
 Quarry Farm  
 Ancaster, Nr Grantham  
 Lincolnshire, England


**Technical Results**

<b>Description</b>	Fine-grained Jurassic Limestone Durable with good weathering qualities	
<b>Country of Origin</b>	UK	
<b>Geological Type</b>	Jurassic Limestone	
<b>Colour</b>	Beige / Blue & Beige / Occasional Pink variations	
<b>Density</b>	2410 kg/m <sup>3</sup>	
<b>Compressive Strength</b>	85MPa	BS EN 1926 (1999)
<b>Water Absorption</b>	3.92%	BS EN 13755 (2002)
<b>Porosity</b>	8.3%	BS EN 1936 (1999)
<b>Durability</b>	Pass Change in flexural strength 0.8%	BS EN 1341 (2001)
<b>Slip Resistance</b>	Dry 82 Wet 82	BS EN 1341 (2001)
<b>Abrasion Resistance</b>	31.6mm Light commercial use	BS EN 1341 (2001)
<b>Salt crystallisation</b>	Weight loss -0.51% Excellent	BS EN 12371
<b>Saturation co-efficient</b>	0.9%	BRE 89
<b>Average Block Size</b>	1500L x 1000W x 300H	

**Sales:**

Block Stone Limited  
 Grant House  
 Prospect Way  
 Hutton  
 CM13 1XD

**Tel:** +44 (0) 1246 554450

**Email:** sales@blockstone.com

[www.blockstone.com](http://www.blockstone.com)

Please note that stone is a natural product and all results are subject to variation